

1911

51

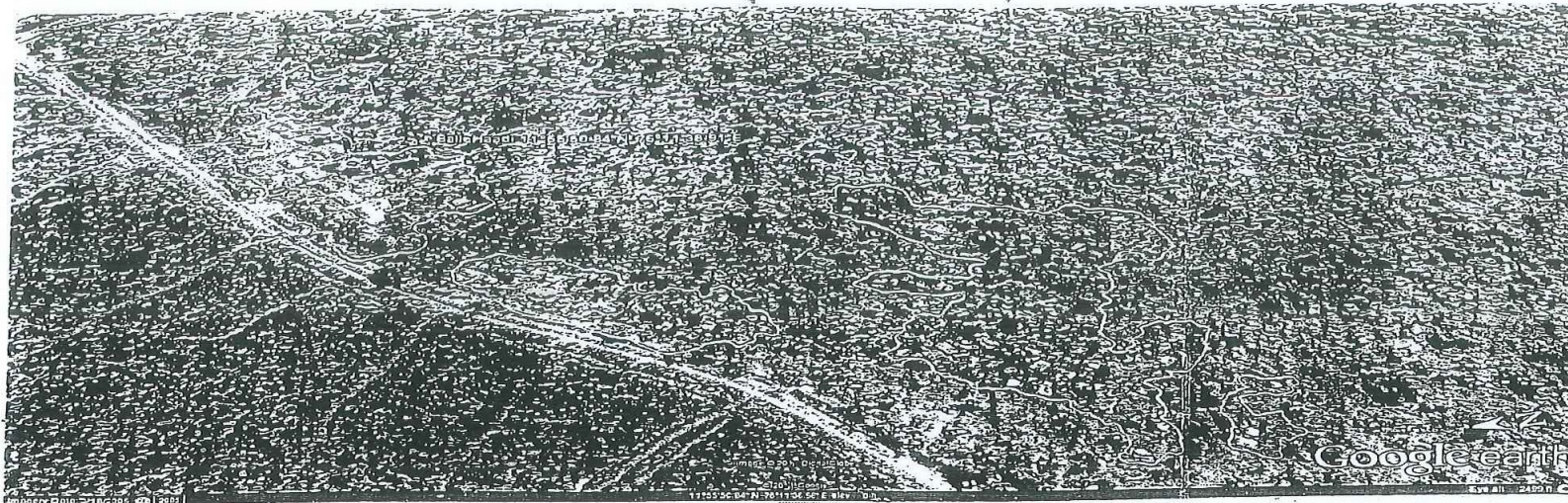


Fig: 5

Imagery date:  
March 18, 2005

State: Karnataka

District: Mysore

Taluk: H.D.Kote

Range: D.B.Kuppe

2005 Satellite imagery of Balle Haadi (settlement) located within the Rajiv Gandhi National Park (Nagarahole)  
National Park Co-ordinates - 11°51'20" - 12° 15'37"N, 76°00'02" - 76°17'13"E  
Yellow polygons: Depict forest area occupied on/before 2005

2011 Satellite imagery of Balle Haadi (settlement) located within the Rajiv Gandhi National Park (Nagarahole)  
National Park Co-ordinates - 11°51'20" - 12° 15'37"N, 76°00'02" - 76°17'13"E  
Red polygons: Depict expansion of settlement after the cut-off date (December 13, 2005) and rights have been granted

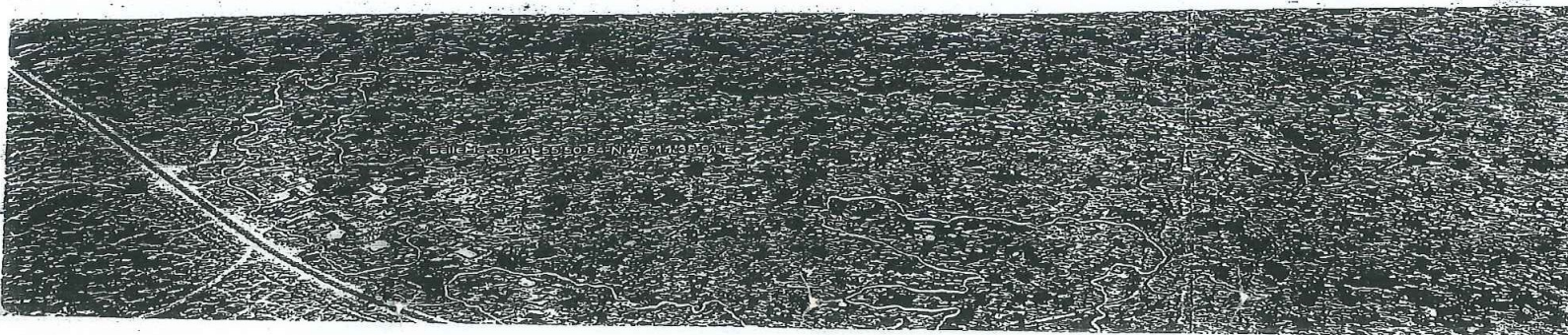


Fig: 6

Imagery date:  
March 08, 2011

State: Karnataka

District: Mysore

Taluk: H.D.Kote